

# WELCOME NEW AFFILIATE MEMBER

SIBELCO  
January 2018



## What motivated SIBELCO to join ICDA?

*SIBELCO joined ICDA in an aim to strenghten its knowledge related to international chromium markets.*

## Brief introduction of SIBELCO

Sibelco was founded in 1872 in Belgium as a family owned silica sand operation. From drinking water treatment to solar technology, every day our materials work as essential components in the progress of society.

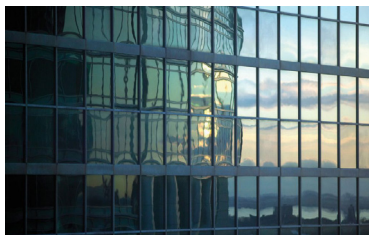
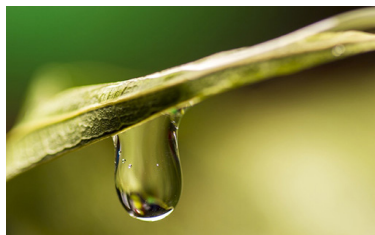
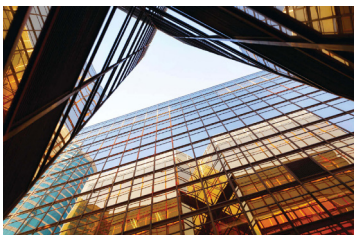
With over 250 production units worldwide Sibelco is an important company in terms of extraction, production and distribution of five major minerals for industrial use: quartz, cristobalite, nepheline, plastic clay and olivine. Sibelco is now operating in over 100 mines, plants, sales offices and distribution warehouses across Europe, Asia, Australia and US.

Furthermore Sibelco treats a lot of other minerals for industrial applications like barite, bentonite, calcite, dolomite, hydromagnesite, kaolin, feldspar, wollastonite, talc, huntite, manganese, chromite, iron, bauxite...

As pioneer in its core business. Sibelco looks back on more than 135 years of experience and a unique know-how.



Alain Castagné  
Sourcing Category Manager



## SIBELCO

Op de Bos 300  
NL-6223 EP Maastricht  
THE NETHERLANDS  
alain.castagne@sibelco.com  
+ 31 43 366 3605  
<https://www.sibelco.com/>